

# Navigation

## How do pilots know where to go? Do they ever get lost?

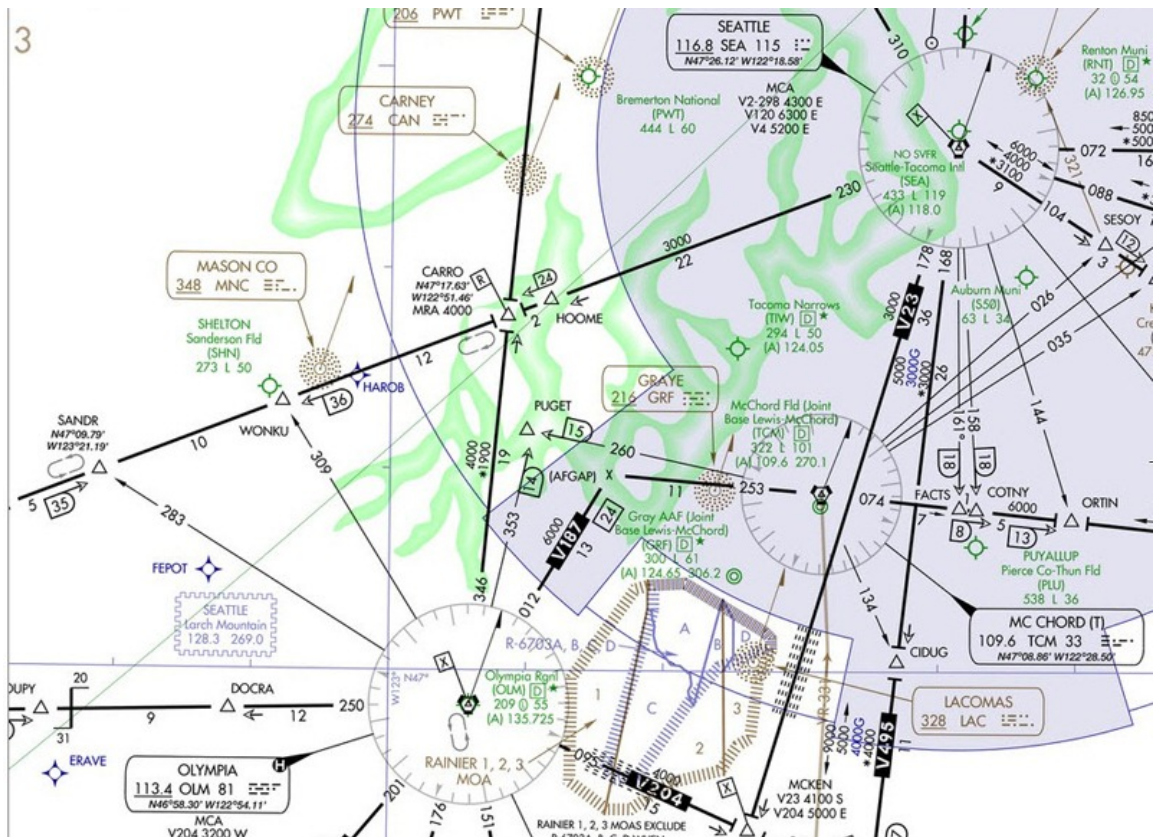
2 Types of Navigation	Cardinal Directions	Where From & To?	Course	Charts	Parts of a VFR Chart
<b>VFR</b> Flying in reference to visual landmarks (what you see out the window)	North 360  East 090	<b>Departure</b>  <b>Arrival</b>  <b>Alternate</b> Where you plan to go if things aren't good at your arrival	The direction you're trying to fly	VFR World Aeronautical Sectional Terminal Area  <b>IFR</b> Departure Plates Low-Altitude Enroute High-Altitude Enroute Terminal Arrival Plates	Expiration Date  Scale  Legend
<b>IFR</b> Flying in reference to your flight instruments (inside the cockpit)	South 180  West 270	<b>Diversion</b> Where you land if there's an emergency.			

## Homework

Practice reading your Seattle VFR Sectional Chart. Show your family how to read it.

### Bonus:

Pick a destination and be able to tell the class approximately what course you would fly to get there from Wenatchee.



• Low-Altitude IFR Chart: